



£2,250

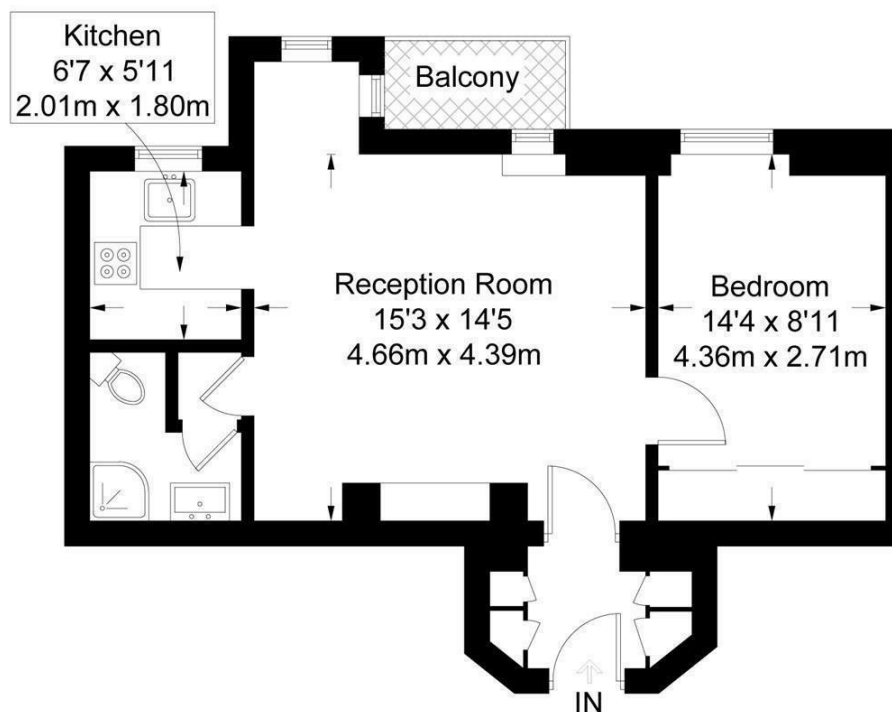
A beautiful and newly re-decorated and re-carpeted one bedroom apartment in a highly sought after mansion block. This spacious property offers a well-proportioned bedroom and living space along with a separate kitchen and bathroom with walk in shower. AVAILABLE NOW.

Bickenhall Mansions is a popular mansion block with 24-hour security and video entry phone. All floors are accessed via private lifts throughout. It is located on a quiet residential road, and yet only moments from Marylebone Road, and a short walk from Baker Street underground and Marylebone Station.



Bickenhall Mansions

Approximate Gross Internal Area = 498 sq ft / 46.3 sq m



First Floor

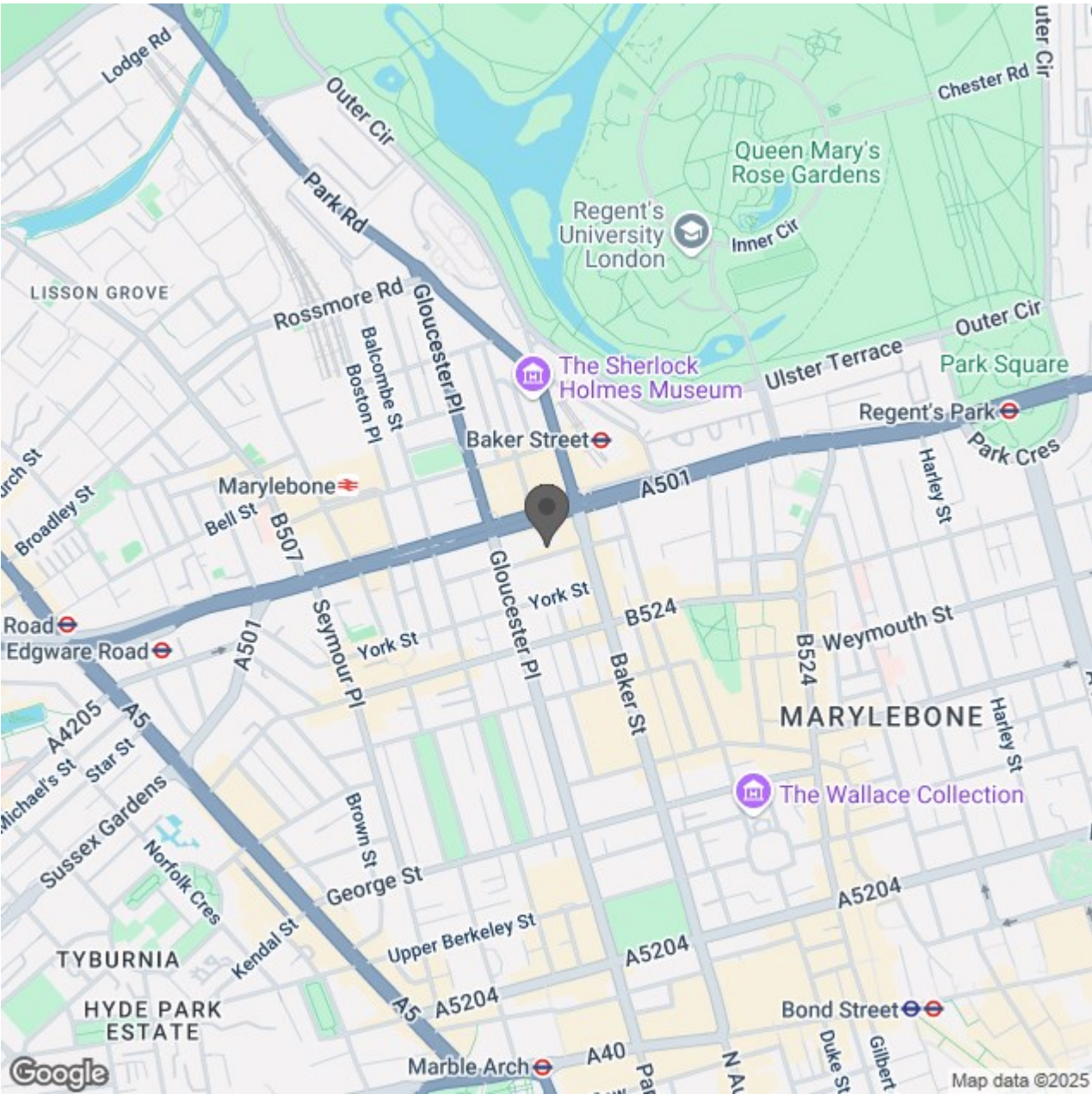
Illustration for identification purposes only, measurements are approximate, not to scale. (ID237844)

- Mansion block
- High Ceilings
- New Carpets
- Bathroom with walk in shower
- Close to Station
- 24 hour security
- Newly decorated
- Ample storgae
- Large double bedroom with built in wardrobe
- Available Immediately



Energy Efficiency Rating		Current	Potential
Very energy efficient - lower running costs			
(92 plus) A			
(81-91) B			
(69-80) C			
(55-68) D			
(39-54) E			
(21-38) F			
(1-20) G			
Not energy efficient - higher running costs			
England & Wales		EU Directive 2002/91/EC	

Environmental Impact (CO ₂) Rating		Current	Potential
Very environmentally friendly - lower CO ₂ emissions			
(92 plus) A			
(81-91) B			
(69-80) C			
(55-68) D			
(39-54) E			
(21-38) F			
(1-20) G			
Not environmentally friendly - higher CO ₂ emissions			
England & Wales		EU Directive 2002/91/EC	



Red.